



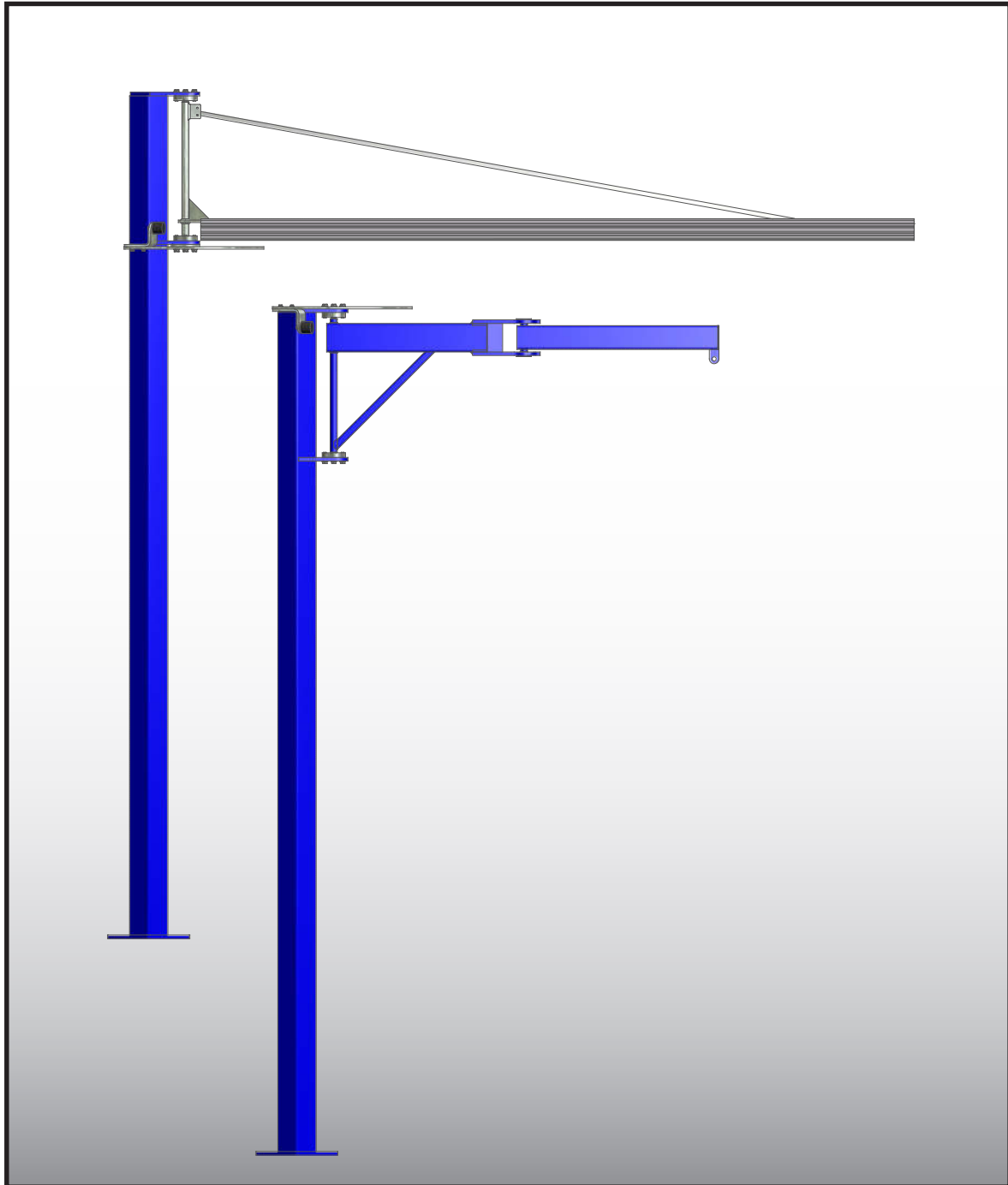
**PAVLÍNEK**<sup>®</sup>  
VÁZACÍ PROSTŘEDKY

EMAIL: [OBCHOD@PAVLINEK.CZ](mailto:OBCHOD@PAVLINEK.CZ)  
TEL: +420 595 693 911  
ŠALOUNOVA 746/31, OSTRAVA VÍTKOVICE  
IČ: 25358511 DIČ: CZ25358511



# User Manual

## Pillar and wall-mounted jib cranes



Pritec Vaculyft AB  
Reg. no.:  
556375-8621  
VAT no.:  
SE556375862101

Address:  
Fjärås industriväg 9  
439 74 Fjärås  
Sweden

Telephone:  
+46 300-543 543  
Fax:  
+46 300-540 002  
Swift:  
SWEDSESS

Bank giro service:  
5724-1630  
Postal giro service:  
705242-6

Internet:  
[www.pritecvaculyft.com](http://www.pritecvaculyft.com)  
E-mail:  
[info@pritecvaculyft.com](mailto:info@pritecvaculyft.com)

# User Manual

## Pillar and wall-mounted jib cranes

We reserve the right, within the framework of further development of the jib cranes described in the user manual, to make technical changes. We can therefore accept no liability with regard to the information, images and descriptions in this user manual.

Warranty claims shall be immediately submitted in writing with a description of the problem and the order number. Wear parts are not covered by the warranty.

### The warranty is invalidated by:

- Careless use
- Inappropriate use
- Use of prohibited operational aides
- Incorrect installation
- Use of spare part other than original spare parts from Pritec Vaculyft

### Safety instructions

The maximum load is specified on the crane boom. This may not be exceeded. The maximum load includes the load to be lifted and the weight of the tool. The crane is solely designed for lifting and slewing loads.

Work with the jib crane may only be conducted by trained and instructed personnel.

Work with electronic equipment may only be conducted by electricians.

Persons under the influence of drugs, alcohol or medications that affect reaction and judgement capabilities may neither use, maintain nor repair the jib crane.

### Prohibited use

The jib crane is solely designed for lifting and slewing loads.

All other use of the jib crane is considered as prohibited use.

Other restrictions regarding work or operations that are prohibited for the jib crane, due to them entailing risks to life and limb or able to damage the jib crane, are listed below.

- Transport of persons with the jib crane is not permitted.
- Suspended loads may not pass over persons.
- Suspended loads may not be pulled obliquely or dragged.
- Loads that have fastened or jammed may not be pulled loose with the hoisting device.
- Loads in excess of those permitted may not be suspended.
- Suspended loads may not be left unsupervised.
- When handling loads with the hoist/tube hoist, the lifting chain or strap must always be tensioned.

Pritec Vaculyft bears no liability for damages caused by prohibited use or operation.

All risks are borne entirely by the user.

### General information about safety

Safety and warning devices, such as signs, stickers and markings on the jib crane may not be removed or damaged. They must always be legible.

It is the responsibility of the operator to check this at least once each shift, and if visible damages are discovered on the jib crane, to immediately report this.

It is the user's responsibility to ensure that the jib crane is only used when in proper condition and that all applicable, relevant safety requirements and directives are fulfilled.

The jib crane shall be immediately removed from service if functional faults are discovered.



**PAVLÍNEK**<sup>®</sup>  
VÁZACÍ PROSTŘEDKY

EMAIL: [OBCHOD@PAVLINEK.CZ](mailto:OBCHOD@PAVLINEK.CZ)  
TEL: +420 595 693 911  
ŠALOUNOVA 746/31, OSTRAVA VÍTKOVICE  
IČ: 25358511 DIČ: CZ25358511



No changes, additions or revisions that can affect safety may be made without the approval of Pritec Vaculyft. This also applies to mounting and adjustment, as well as welding on bearing components.

Pritec Vaculyft original parts must be used. They comply with the technical requirements and are necessary for the validity of the warranty.

### **Periodic inspection**

Machines and cranes must be inspected by a specialist at least once yearly. The periodic inspection is principally a function check and ocular inspection.

Checks of the condition of components with regard to damage, wear and function.

### **All inspections shall be arranged and documented by the user.**

Compliance is required with the prescribed intervals, or those specified in the user manual, for periodic inspections/tests/checks.

## **Mounting of pillar/wall bracket**

**Before mounting of the pillar/wall bracket is begun, the strength of the floor/wall must be checked by a structural engineer. The floor/wall must be engineered for the drawing forces and loads that occur.**

For wall-mounted jib cranes, the following forces occur:

- Perpendicular to wall - Drawing forces.
- Parallel to wall - Shearing forces.

Stop lugs or similar may need to be mounted to prevent the bracket from gliding.

If the bolts are not sufficiently tightened, the bracket's position can change and the crane will then become unusable.

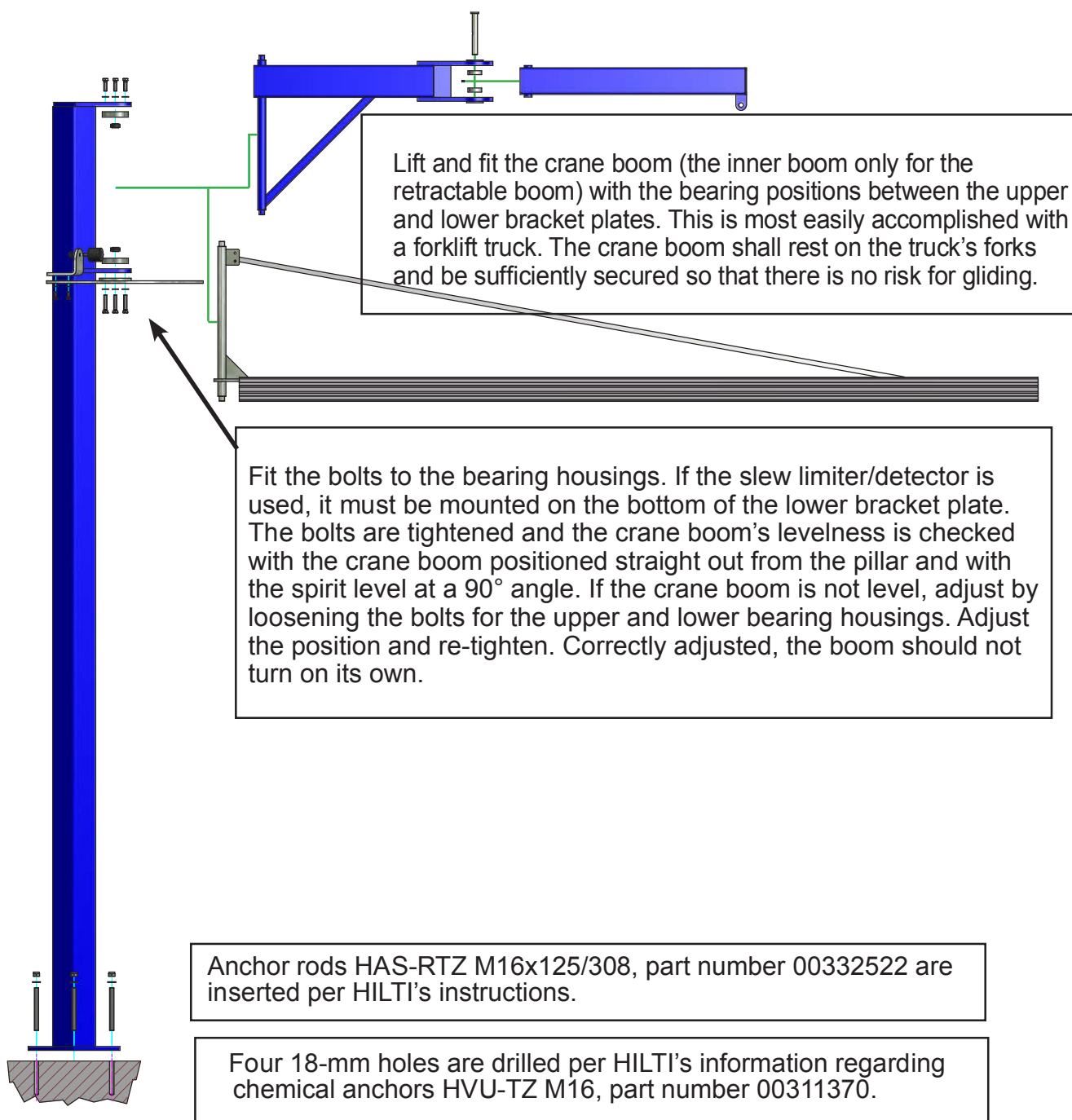
Depending on the building's construction (steel, reinforced concrete columns), it may be necessary to secure the bracket with either chemical anchors or mechanical joints/bolting in existing steel constructions.

1. Lift the pillar and position it at the measured/designated location. **It is very important that the pillar is secured in the pneumatic equipment that is used in installation so that the pillar cannot glide or fall when raised.**
2. The pillar is adjusted so that the mounting brackets for the crane boom/shaft are positioned at the middle of the planned working area for the crane boom.
3. Four 18-mm holes are drilled per HILTI's instructions for chemical anchors HVU-TZ M16, part number 00311370.
4. The pillar is moved so that the drilled holes can be cleaned. HILTI's round steel bush and blow-out pump are used for this. **The holes must be entirely free from concrete fragments and dust.**
5. The pillar is repositioned and a chemical anchor package is inserted into each hole.
6. Anchor rods HAS-RTZ M16x125/30, part number 00332522 are inserted per HILTI's instructions.
7. The pillar is trued up (checked with a spirit level). As needed, shims are used between the floor and entire breadth of the pillar foot plate.
8. The joint is tightened per HILTI's instructions.
9. All bolted joints shall be re-tightened after about 1–2 months of operation.



**PAVLÍNEK**<sup>®</sup>  
VÁZACÍ PROSTŘEDKY

EMAIL: [OBCHOD@PAVLINEK.CZ](mailto:OBCHOD@PAVLINEK.CZ)  
TEL: +420 595 693 911  
ŠALOUNOVA 746/31, OSTRAVA VÍTKOVICE  
IČ: 25358511 DIČ: CZ25358511



# Mounting of crane boom/retractable boom

1. Before mounting of the crane boom is begun, it must be checked for any damages that may have occurred during shipping.
2. Loosen the bolts at the bearing positions for the crane shaft.
3. Lift and fit the crane boom (the inner boom only for the retractable boom) with the bearing positions between the upper and lower bracket plates. This is most easily accomplished with a forklift truck. The crane boom shall rest on the truck's forks and be sufficiently secured so that there is no risk for gliding.
4. Fit the bolts to the bearing housings. If a slew limiter is used, it must be mounted on the bottom of the lower bracket plate. The bolts are tightened and the crane boom's levelness is checked with the crane boom positioned straight out from the pillar and with the spirit level at a 90° angle. If the crane boom is not level, adjust by loosening the bolts for the upper and lower bearing housings. Adjust the position and re-tighten. Correctly adjusted, the boom should not turn on its own.
5. For the retractable boom, the outer section is mounted between the inner boom's bearing brackets. The shaft is fitted through the bearings and spacer on the outer boom. The stop screw for locking the shaft is fitted and locked against the shaft.
6. The crane boom is moved laterally. The boom should easily move to the bearing points.
7. The end-position buffer is mounted and adjusted (only for the mounted slew limiter).
8. The crane shaft bearings are lubricated with a grease gun.
9. All bolted joints shall be re-tightened after about 1–2 months of operation.

## Operation

- The load attachment unit and load must hang freely in the carrier. Stiff force-absorbing attachments produced uncontrolled forces that lead to fatigue fractures.
- Manually powered carriers may only be moved using a line on the load or the intended control handle on the tool.  
Manually manoeuvred loads must be moved softly and not jerked along.
- Routine running against end-stops is not permitted.

## The following instructions are both for your safety and to avoid damages to the the equipment.

- Transport of persons with the jib crane is not permitted.
- Suspended loads may not pass over persons.
- Suspended loads may not be pulled obliquely or dragged.
- Loads that have fastened or jammed may not be pulled loose with the hoisting device.
- Loads in excess of those permitted may not be suspended.
- Suspended loads may not be left unsupervised.
- When handling loads with the hoist/tube hoist, the lifting chain or strap must always be tensioned.
- Immediately remove the jib crane from service if defects or functional irregularities are discovered.
- Only Pritec Vaculyft original parts may be used.



**PAVLÍNEK**<sup>®</sup>  
VÁZACÍ PROSTŘEDKY

EMAIL: [OBCHOD@PAVLINEK.CZ](mailto:OBCHOD@PAVLINEK.CZ)  
TEL: +420 595 693 911  
ŠALOUNOVA 746/31, OSTRAVA VÍTKOVICE  
IČ: 25358511 DIČ: CZ25358511



## **The jib crane may only be put in service after inspection.**

Prior to putting the jib crane in service, check:

- That the carrier travels freely along the entire length of the track without binding.
- That the carrier does not move on its own, both with and without a load.
- That the crane boom does not begin moving on its own.
- That all bolted joints have been inspected and tightened.
- That hoisting equipment is correctly mounted and the joints tightened/secured with pins.

## **Maintenance**

It is the responsibility of the operator to check this at least once each shift, and if visible damages are discovered on the jib crane, to immediately report this.

It is the user's responsibility to ensure that the jib crane is only used when in proper condition and that all applicable, relevant safety requirements and directives are fulfilled.

Other maintenance, including inspection of the carrier, crane boom, bearings and attachments to hoisting equipment and bolted joints, shall be conducted at least once each quarter.

Lubrication of crane boom bearings shall be conducted in conjunction with quarterly inspections.

Upon service/maintenance of hoists, the main switch on the pillar must be in the off position. Check that the hoist is not under power before beginning work.

For service/maintenance of vacuum hoists, the supply air must be disconnected. Check that the vacuum hoist is not under pressure before beginning work.

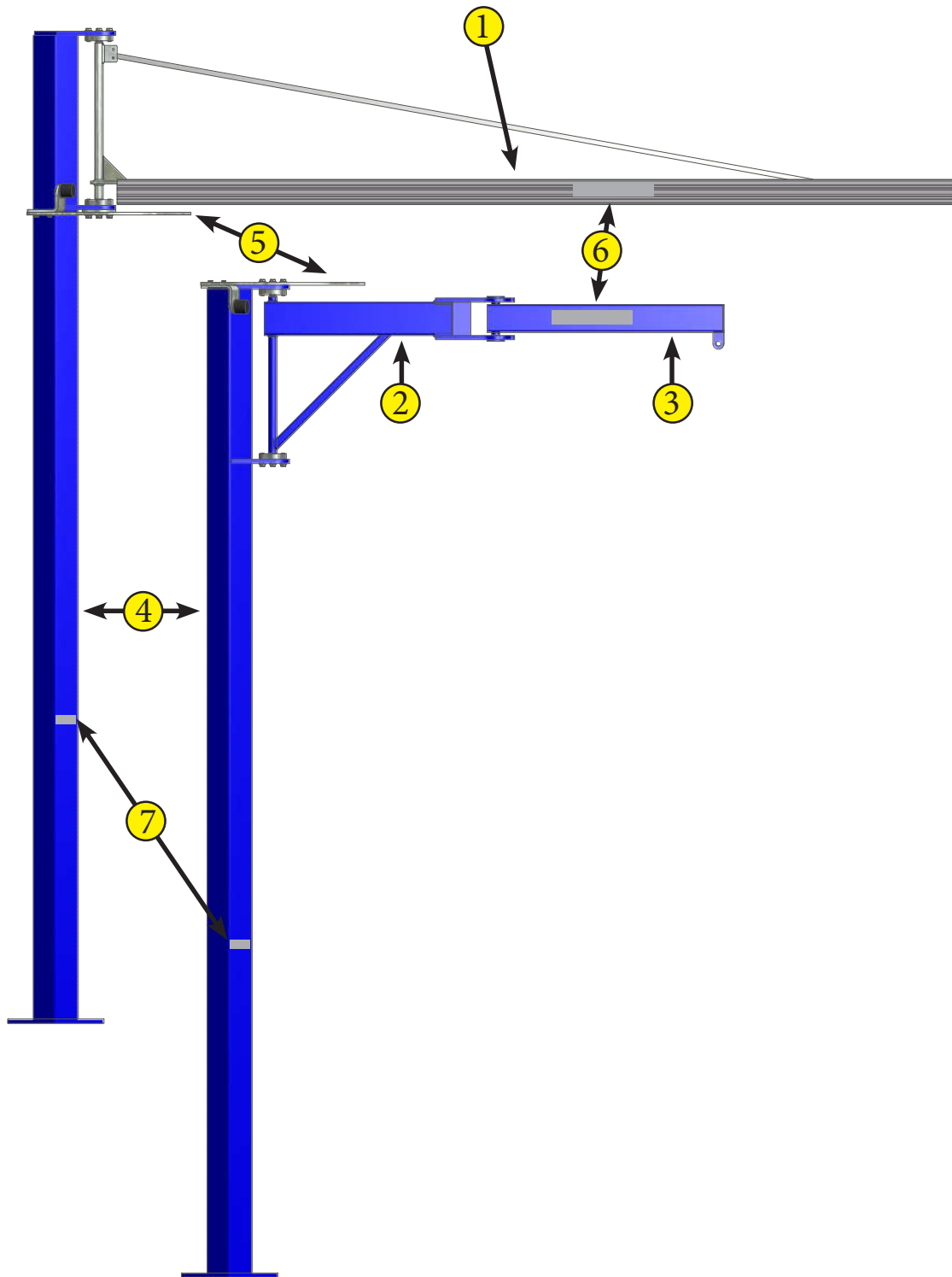
For other hoisting equipment than mentioned above, applicable safety instructions shall be followed. Defective parts shall be immediately replaced.



**PAVLÍNEK**<sup>®</sup>  
**VÁZACÍ PROSTŘEDKY**

**EMAIL: [OBCHOD@PAVLINEK.CZ](mailto:OBCHOD@PAVLINEK.CZ)**  
**TEL: +420 595 693 911**  
**ŠALOUNOVA 746/31, OSTRAVA VÍTKOVICE**  
**IČ: 25358511 DIČ: CZ25358511**





## Crane components

1. Crane boom, including hoist carrier, media carrier and end-stop.
2. Inner retractable boom
3. Outer retractable boom
4. Complete pillar
5. Slew limiter/Detector
6. Maximum load sign (2 signs)
7. Manufacturer's plate



**PAVLÍNEK**<sup>®</sup>  
VÁZACÍ PROSTŘEDKY

EMAIL: [OBCHOD@PAVLINEK.CZ](mailto:OBCHOD@PAVLINEK.CZ)  
TEL: +420 595 693 911  
ŠALOUNOVA 746/31, OSTRAVA VÍTKOVICE  
IČ: 25358511 DIČ: CZ25358511

